



NAPSF

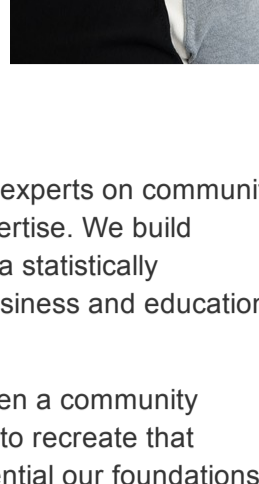
NEBRASKA ASSOCIATION OF PUBLIC SCHOOL FOUNDATIONS

NAPSF News September 2021

Thank You From NAPSF Outgoing Board President

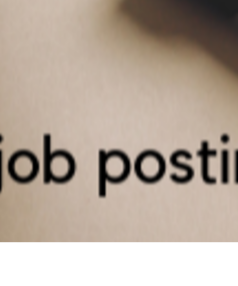
Sara Martin, School District 145 Foundation for Education (Waverly/Eagle)

We know the quality of the local school district determines the quality of local neighborhoods, and family involvement is the number one indicator of student success nationwide. Nebraska's 272 public school districts have renewed interest from their constituents because this tumultuous year highlighted the power of public education. I'm excited about what that means for students and the work we do through our foundations to increase participation from our local communities in education. How communities support education matters to everyone in our civil society, preparing children to take part in our American democracy that requires citizen participation and citizen responsibility to succeed.



For decades, Nebraska's public school foundations have been the resident experts on community engagement. We foster partnerships which exploit strengths and share expertise. We build pathways so schools can directly engage their local community, resulting in a statistically significant increase in reputation and support. We speak fundraising and business and education and somewhere in the middle is the epitome of public education function.

30+ years ago a small town in northern Iowa taught me what is possible when a community invests in its public school district and I've spent most of my career working to recreate that camaraderie. The public school foundation industry is arduous, but the potential our foundations represent is worth the work. This past year serving as NAPSF President has stretched my capacity as a leader. While I celebrate board goals accomplished and industry progress made, the relationships with you...seasoned colleagues and new energy alike...will be what I forever cherish most. Thank you for trusting me to be part of NAPSF's story.

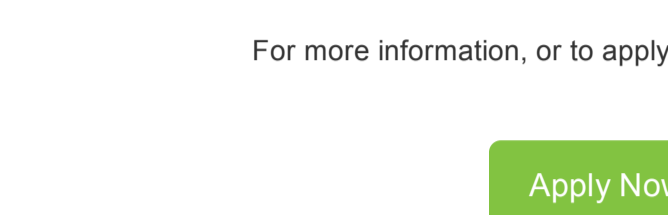


NAPSF Coffee Talk

We are back in the swing of things! Come unwind at Coffee Talk and engage in some group therapy.

Join us **October 7, 9am - 10am**

[Coffee Talk Zoom Link](#)



The Foundation for Lincoln Public Schools is hiring!

- **Director of Operations**
- **Director of Development**

For more information, or to apply, click the button below.

[Apply Now](#)

NAPSF 21-22 Membership Application - Register Now!

Current members, please click the button below to fill out your NAPSF membership application as soon as possible. We have 12 applications submitted so far, which means we need 20 more members to complete this step.

When you fill out the form, please have your 990 with you. It should take no more than 10 minutes to complete.

You will have the option to pay your membership dues when you fill out the form, or you can mail a check to:

**Nebraska Association of Public School Foundations
c/o Grand Island Public Schools Foundation
PO Box 4904
Grand Island, NE 68802**

Thank you to those who have completed the application. It's so important to compile this data not only to make our state organization stronger, but to make YOUR organizations stronger.

[21-22 NAPSF Membership Application](#)

connect the **DOTS**

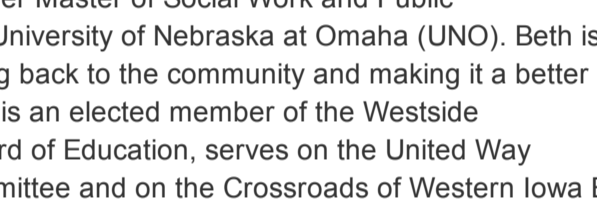
NAPSF 2021 Virtual Fall Conference

**Monday, November 8, 2021
9:00am - 4:00pm CST**

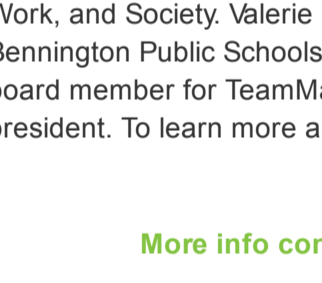
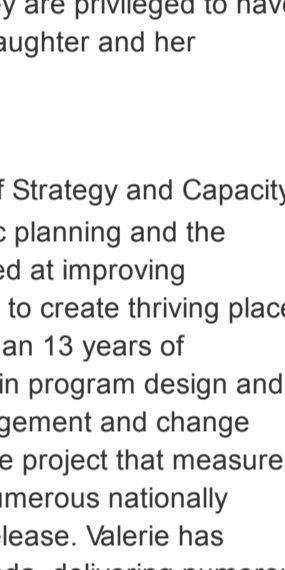
Hosted by Grand Island Public Schools Foundation

The conference planning committee met on September 30th to discuss sponsors, themes, breakout sessions and keynote speakers. The next committee meeting will be held October 12 from 9am - 10am. If you have any thoughts, suggestions or comments, we would love to hear from you! Email info@napsf.org or join our Zoom meeting.

Afternoon Session Keynote Speakers: Strategizing for Impact



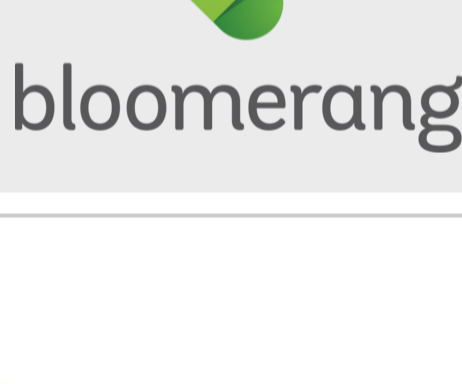
Beth Morrissette, MPA & MSW, is the founding CEO of Parlay Consulting Firm. She specializes in building organizational capacity through board governance, strategic planning, and implementation coaching. Beth has worked in the nonprofit sector for about 20 years; from direct services to Executive Director to Board Member. As an Executive Director, she helped lead a collective impact organization to successfully build partnership across sectors and diversify its funding sources. She received her Master of Social Work and Public Administration from the University of Nebraska at Omaha (UNO). Beth is a strong believer in giving back to the community and making it a better place for the future. She is an elected member of the Westside Community Schools Board of Education, serves on the United Way Community Impact Committee and on the Crossroads of Western Iowa Board of Directors. Beth is honored to have been the recipient of the 2015 Ten Outstanding Young Omahans (TOYO) award and the University of Nebraska at Omaha CPACS Alumni award. She and her husband are parents to a fantastic 16-year-old son and are former foster parents. They are privileged to have developed and maintained a strong relationship with a wonderful foster daughter and her biological family. Learn more about Beth on her [LinkedIn](#) profile.



Valerie Calderon, Ph.D., is Director of Strategy and Capacity Building at Parlay. She specializes in strategic planning and the design and implementation of programs aimed at improving organizational outcomes and helping leaders to create thriving places to learn, serve, and work. Valerie has more than 13 years of experience leading internal and client teams in program design and implementation. She has led employee engagement and change management initiatives, directed a large-scale project that measures hope and engagement in schools, and led numerous nationally representative education studies for public release. Valerie has provided advice and learning to hundreds of leaders in the U.S. and Canada, delivering numerous keynote addresses and workshops both in-person and online. She has published numerous case studies, reports, and other content for websites and peer-reviewed journals. Most recently, she published a chapter for Applied Positive Psychology: Improving Everyday Life, Health, Schools, Work, and Society. Valerie is in her eleventh year of service as an elected member of the Bennington Public Schools Board of Education and is the current president. She was a founding board member for TeamMates Mentoring in Bennington and served as both vice president and president. To learn more about Valerie, review her [LinkedIn](#) profile.

[More info coming soon on breakout sessions and morning keynote!](#)

Thank you [bloomerang](#) for sponsoring our NAPSF 2021 Virtual Fall Conference!



NAPSF Membership Benefits

NAPSF 21-22 Membership Application - Register Now!

Current members, please visit our website to fill out your [application](#). Make sure to have your 990 when completing. If you have questions, please contact NAPSF [here](#).

NAPSF Website - We Want to Hear From You

Does your foundation have an inspiring success story? Has your foundation been in the news? Do you have information or insight your peers would benefit from?

Submit your foundation stories, news, or articles [here](#) to be featured in upcoming NAPSF newsletters.

NSFA Membership

All members of NAPSF receive a NSFA membership. This includes free NSFA Webinars and discounts for NSFA conferences.



We are currently 32 members strong at the Nebraska Association of Public School Foundations. A list of our membership is below.

- Anselmo-Merna Public Schools Foundation
- Ashland-Greenwood Public Schools Foundation
- Aurora Public Schools Foundation
- Beatrice Educational Foundation
- Bellevue Public Schools Foundation
- Bennington Public Schools Foundation
- Cardinal Education Foundation (South Sioux City)
- Central High School Foundation (Omaha)
- Columbus Public Schools Foundation, Inc.
- Cozad Public Schools Foundation
- Creek Valley School Educational Foundation
- DC West Schools Foundation
- Elkhorn Public Schools Foundation
- Foundation for Lincoln Public Schools
- Gering Public Schools Foundation
- Grand Island Public Schools Foundation
- Hastings Public Schools Foundation
- Kearney Public Schools Foundation
- Millard Schools Education Foundation, Inc.
- Minden Schools Foundation
- Norfolk Public Schools Foundation
- North Platte Public Schools Foundation
- Northwest Education Foundation
- Ogallala Public Schools Foundation
- Omaha Public Schools Foundation
- Papillion La Vista Schools Foundation
- Pioneer Fund Foundation
- Ralston Community Schools Foundation
- School District 145 Foundation for Education (Waverly/Eagle)
- Scottsbluff Schools Foundation
- Wayne Community Schools Foundation
- Westside Community Schools Foundation, Inc.

Haven't Become a NAPSF Member Yet?

The Nebraska Association of Public School Foundations is a state affiliate of the National School Foundation Association. This means that as a member of the Nebraska Association of Public School Foundations, you will get the discounted conference rate and all other full benefits of membership to the national organization as well as Nebraska. You pay one rate to Nebraska and get two memberships Statewide and National! What a deal!

[Learn more about NAPSF membership benefits](#)

NAPSF Event Calendar

NAPSF Coffee Talk

When: Thursday, Oct. 7, 2021, 9:00am - 10:00am CST

Location: Zoom Meeting - [Coffee Talk Zoom Link](#)

NAPSF Conference Planning Committee Meeting

When: Tuesday, Oct. 12, 2021, 9:00am - 10:00am CST

Location: Zoom Meeting - [Zoom Link](#)

NAPSF 2021 Annual Conference

When: Monday, November 8, 2021, 9:00am - 4:00pm CST

Location: Virtual, Hosted by Grand Island Public Schools Foundation

[Register Now!](#)

Questions or Comments? Contact NAPSF [Here](#).



Share this email:



[Manage](#) your preferences | [Opt out](#) using TrueRemove®
Got this as a forward? [Sign up](#) to receive our future emails.
View this email [online](#).

123 S Webb Road
Grand Island, NE | 68803 United States

This email was sent to .
To continue receiving our emails, add us to your address book.

[Subscribe](#) to our email list.